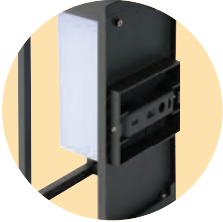


LED SOLAR LAMP

Product&Family Code: 078 014 0001

SOLARIS-1



WITH MICROWAVE SENSOR

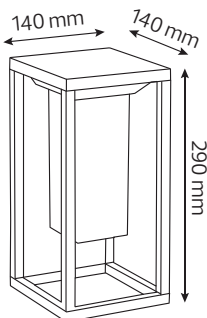
STRONG LIGHT
3 Hours
220 lm

WEAK LIGHT
12 Hours
12 lm

2 modes available:
First Mode:
Weak Light all time - Strong Light while motion detected
Second Mode:
Strong Light all time

Technical Data	
Voltage & Battery type	Li-ion Battery 3.7V 2600mAh
Product Wattage (W)	2
Equivalence with incandescent lamp(W)	16
Colour Render Index (Ra)	>Ra80
Colour Temperature (K)	4000
Materials	Aluminium Body
Protection Class	III
EEI	A to A++
Luminous Flux (lm)	220
Warm-up time up to 60 %of the full light output	Instant Full Light
Rated Life (hrs) ⌚	50.000
IP Rating	65
Solar Charging Time	4-6 Hours
Duration time	3-12 Hours

Technical Drawing



Applications

- Designed Outdoor applications: Gardens

Features

- High Lumen and CRI, Good quality & Constant Current driver.
- High heat dissipation, low carbon and environmental protection.
- LED Lamp Base.
- Innovative Design of Assembly Structure

